

Akira



DEN HARTIGH BV

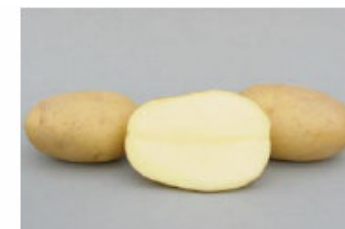
pommes de terre - potatoes - kartoffeln

P.O.Box 3
8300 AA EMMELOORD
Netherlands

phone +31-527-298000
telefax +31-527-298001
info@denhartigh-potato.nl

Variety description

Maturity		medium-late
Plant		tall fairly rapid development good cover inflorescences rather few white flowers
Tubers	shape	oval shallow eyes very large
	skin	yellow
	flesh	yellow
Yield		very good
Quality		fairly firm texture free from discoloration fairly high dry matter content
Blight	foliage	slightly susceptible
	tuber	slightly susceptible
Virus	A	moderately susceptible
	Yn	slightly susceptible
	X	very good resistance
	leaf roll	moderately susceptible
Golden nematode		resistant A (Ro1)
Wart		immune
Common scab		very good resistance
Drought		slightly susceptible



Cross: Nicola x Gloria

Production notes

Soil		most suitable for sandy and light clay soil
Fertilisation	N P K	best performance at 80% of local requirement as per local requirement as per local requirement
Weed control		moderately susceptible to SENCOR; maximum dose 500 gr per hectare
Anti sprouting		to avoid skin burn use of chemicals is not recommended
Storage		good, preferable at 8°C

Amanda



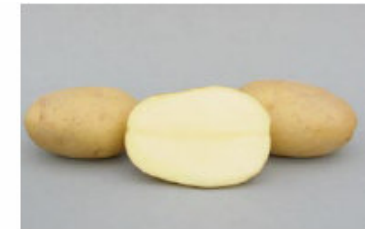
DEN HARTIGH BV
pommes de terre - potatoes - kartoffeln

P.O.Box 3
8300 AA EMMELOORD
Netherlands

phone +31-527-298000
telefax +31-527-298001
info@denhartigh-potato.nl

Variety description

Maturity		medium-early
Plant		tall rapid development good cover inflorescences normal white flowers
Tubers	shape	round to oval shallow eyes
	skin	large yellow
	flesh	pale-yellow
Yield		good
Quality		mealy texture free from discoloration high dry matter content suitable for French fries
Blight	foliage	slightly susceptible
	tuber	very good resistance
Virus	A	very good resistance
	Yn	moderately susceptible
	X	very good resistance
	leaf roll	very good resistance
Golden nematode		resistant A (Ro1,4) and DE (Pa2,3)
Wart		immune
Common scab		slightly susceptible
Drought		slightly susceptible



Cross: SA 94-709-2 x Innovator

Production notes

Soil		most suitable for light clay soil
Fertilisation	N	as per local requirement
	P	as per local requirement
	K	as per local requirement
Weed control		moderately susceptible to SENCOR; maximum dose 500 gr per hectare
Anti sprouting		to avoid skin burn use of chemicals is not recommended
Storage		very good

Dura



DEN HARTIGH BV

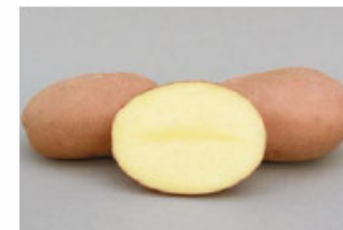
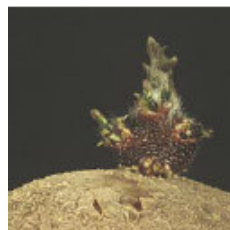
pommes de terre - potatoes - kartoffeln

P.O.Box 3
8300 AA EMMELOORD
Netherlands

phone +31-527-298000
telefax +31-527-298001
info@denhartigh-potato.nl

Variety description

Maturity		medium-late
Plant		tall fairly rapid development good cover inflorescences rather numerous red-purple flowers
Tubers	shape	oval very shallow eyes very large
	skin	red
	flesh	yellow
Yield		very good
Quality		fairly firm texture free from discoloration high dry matter content
Blight	foliage	slightly susceptible
	tuber	slightly susceptible
Virus	A	very good resistance
	Yn	very good resistance
	X	very good resistance
	leaf roll	slightly susceptible
Golden nematode		resistant A (Ro1)
Common scab		slightly susceptible
Drought		slightly susceptible



Cross: Stemster x Impala

Production notes

Soil		most suitable for light clay soil
Fertilisation	N P K	best performance at 80% of local requirement as per local requirement as per local requirement
Weed control		moderately susceptible to SENCOR; maximum dose 500 gr per hectare
Anti sprouting		to avoid skin burn use of chemicals is not recommended
Storage		very good for long term

DEN HARTIGH BV is not responsible for any damage caused by using this information.

Endeavour



DEN HARTIGH BV

pommes de terre - potatoes - kartoffeln

P.O.Box 3
8300 AA EMMELOORD
Netherlands

phone +31-527-298000
telefax +31-527-298001
info@denhartigh-potato.nl

Variety description

Maturity		medium-late
Plant		medium height rapid development good cover inflorescences normal white flowers
Tubers	shape	round shallow eyes large
	skin	yellow
	flesh	yellow
Yield		good
Quality		mealy texture fairly free from discoloration high dry matter content
Blight	foliage	slightly susceptible
	tuber	slightly susceptible
Virus	A	very good resistance
	Yn	very good resistance
	X	very good resistance
	leaf roll	very good resistance
Golden nematode		resistant A (Ro1)
Common scab		slightly susceptible
Drought		slightly susceptible



Cross: Futura x YP88-129

Production notes

Soil		most suitable for sandy and light clay soil
Fertilisation	N	as per local requirement
	P	as per local requirement
	K	as per local requirement
Weed control		susceptible to SENCOR; maximum dose 250 gr per hectare
Harvest		to avoid skin burn chemicals should be applied with care on perfectly dry tubers only
Storage		very good

Eos



DEN HARTIGH BV

pommes de terre - potatoes - kartoffeln

P.O.Box 3
8300 AA EMMELOORD
Netherlands

phone +31-527-298000
telefax +31-527-298001
info@denhartigh-potato.nl

Variety description

Maturity		medium-late
Plant		tall initial development somewhat slow good cover inflorescences rather few white flowers
Tubers	shape	oval very shallow eyes large
	skin	pale-yellow
	flesh	yellowish white
Yield		very good
Quality		fairly firm texture free from discoloration fairly high dry matter content
Blight	foliage	slightly susceptible
	tuber	slightly susceptible
Virus	Yn	very good resistance
	X	very good resistance
	leaf roll	moderately susceptible
Golden nematode		resistant A (Ro1)
Wart		immune
Common scab		slightly susceptible
Drought		slightly susceptible



Cross: Mondial x W72-22-496

Production notes

Soil		most suitable for light clay soil
Fertilisation	N P K	best performance at 80% of local requirement as per local requirement as per local requirement
Weed control		slightly susceptible to SENCOR; maximum dose 1.000 gr per hectare
Anti sprouting		to avoid skin burn use of chemicals is not recommended
Storage		very good for long term

DEN HARTIGH BV is not responsible for any damage caused by using this information.

Forza



DEN HARTIGH BV

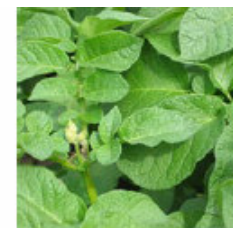
pommes de terre - potatoes - kartoffeln

P.O.Box 3
8300 AA EMMELOORD
Netherlands

phone +31-527-298000
telefax +31-527-298001
info@denhartigh-potato.nl

Variety description

Maturity		very early to early
Plant		medium height fairly rapid development fairly good cover inflorescences few white flowers
Tubers	shape	long-oval very shallow eyes large
	skin	dark-yellow
	flesh	dark-yellow
Yield		good
Quality		slightly mealy texture free from discoloration very high dry matter content excellent for French fries
Blight	foliage	slightly susceptible
	tuber	slightly susceptible
Virus	A	very good resistance
	Yn	very good resistance
	X	very good resistance
	leaf roll	very good resistance
Golden nematode		resistant A (Ro1,4) part.res. DE (Pa2,3)
Common scab		moderately susceptible
Drought		slightly susceptible



Cross: Agria x Innovator

Production notes

Soil		most suitable for light clay soil
Fertilisation	N	as per local requirement
	P	as per local requirement
	K	as per local requirement
Weed control		very susceptible to SENCOR; application of other herbicides is recommended
Anti sprouting		to avoid skin burn chemicals should be applied with care on perfectly dry tubers only
Storage		very good

Granola



DEN HARTIGH BV

pommes de terre - potatoes - kartoffeln

P.O.Box 3
8300 AA EMMELOORD
Netherlands

phone +31-527-298000
telefax +31-527-298001
info@denhartigh-potato.nl

Variety description

Maturity		medium-late
Plant		tall initial development somewhat slow good cover inflorescences normal red-purple flowers
Tubers	shape	round to oval shallow eyes medium-large
	skin	yellow
	flesh	yellow
Yield		good
Quality		fairly firm texture free from discoloration fairly high dry matter content
Blight	foliage	slightly susceptible
	tuber	slightly susceptible
Virus	A	very good resistance
	Yn	slightly susceptible
	leaf roll	slightly susceptible
Golden nematode		resistant A (Ro1,4)
Common scab		very good resistance
Drought		slightly susceptible



Cross: 3333/60 x 267.04

Production notes

Soil		most suitable for light clay soil
Fertilisation	N	as per local requirement
	P	as per local requirement
	K	as per local requirement
Weed control		very susceptible to SENCOR; application of other herbicides is recommended
Anti sprouting		to avoid skin burn use of chemicals is not recommended
Storage		very good for long term

Labella



DEN HARTIGH BV

pommes de terre - potatoes - kartoffeln

P.O.Box 3
8300 AA EMMELOORD
Netherlands

phone +31-527-298000
telefax +31-527-298001
info@denhartigh-potato.nl

Variety description

Maturity		medium-early
Plant		medium height fairly rapid development good cover inflorescences normal red-purple flowers
Tubers	shape	long-oval very shallow eyes medium-large
	skin	red
	flesh	yellow
Yield		good
Quality		fairly firm texture fairly free from discoloration fairly high dry matter content
Blight	foliage	moderately susceptible
	tuber	very good resistance
Virus	A	very good resistance
	Yn	slightly susceptible
	X	slightly susceptible
	leaf roll	very good resistance
Golden nematode		resistant A (Ro1)
Wart		immune
Common scab		slightly susceptible
Drought		slightly susceptible



Cross: YP86-150 x YP88-129

Production notes

Soil		most suitable for sandy and light clay soil
Fertilisation	N	as per local requirement
	P	as per local requirement
	K	as per local requirement
Weed control		moderately susceptible to SENCOR; maximum dose 500 gr per hectare
Anti sprouting		to avoid skin burn use of chemicals is not recommended
Storage		very good

Lanorma



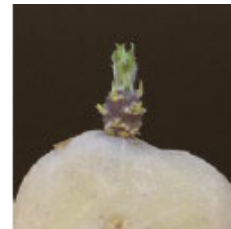
DEN HARTIGH BV
pommes de terre - potatoes - kartoffeln

P.O.Box 3
8300 AA EMMELOORD
Netherlands

phone +31-527-298000
telefax +31-527-298001
info@denhartigh-potato.nl

Variety description

Maturity	medium-early
Plant	medium height fairly rapid development good cover inflorescences normal white flowers
Tubers	
shape	round to oval very shallow eyes large
skin	pale-yellow
flesh	pale-yellow
Yield	very good
Quality	fairly firm texture free from discoloration fairly high dry matter content
Blight	
foliage	moderately susceptible
tuber	moderately susceptible
Virus	
Yn	very good resistance
X	very good resistance
leaf roll	very good resistance
Golden nematode	resistant A (Ro1) part.res. D (Pa2)
Wart	immune
Common scab	slightly susceptible
Drought	very good resistance



Cross: Bydand x Caesar

Production notes

Soil	most suitable for sandy and light clay soil
Fertilisation	N as per local requirement P as per local requirement K as per local requirement
Weed control	moderately susceptible to SENCOR; maximum dose 500 gr per hectare
Anti sprouting	to avoid skin burn use of chemicals is not recommended
Storage	very good

Laperla



DEN HARTIGH BV

pommes de terre - potatoes - kartoffeln

P.O.Box 3
8300 AA EMMELOORD
Netherlands

phone +31-527-298000
telefax +31-527-298001
info@denhartigh-potato.nl

Variety description

Maturity		very early
Plant		short initial development somewhat slow fairly good cover inflorescences normal light red-purple flowers
Tubers	shape	round to oval shallow eyes
	skin	very large
	flesh	yellowish white pale-yellow
Yield		very good
Quality		firm texture free from discoloration low dry matter content
Blight	foliage	slightly susceptible
	tuber	slightly susceptible
Virus	A	very good resistance
	Yn	slightly susceptible
	X	very good resistance
	leaf roll	very good resistance
Golden nematode		resistant A (Ro1) part.res. D (Pa2)
Wart		immune
Common scab		moderately susceptible
Drought		very good resistance



Cross: Valor x Minerva

Production notes

Soil		most suitable for light clay soil
Fertilisation	N P K	best performance at 80% of local requirement as per local requirement as per local requirement
Weed control		susceptible to SENCOR; maximum dose 250 gr per hectare
Anti sprouting		to avoid skin burn use of chemicals is not recommended
Storage		very good

Leoni



DEN HARTIGH BV

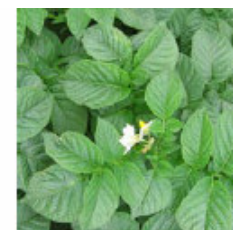
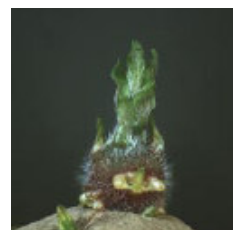
pommes de terre - potatoes - kartoffeln

P.O.Box 3
8300 AA EMMELOORD
Netherlands

phone +31-527-298000
telefax +31-527-298001
info@denhartigh-potato.nl

Variety description

Maturity		very early
Plant		medium height rapid development fairly good cover inflorescences rather few red-purple flowers
Tubers	shape	round to oval shallow eyes very large
	skin	yellow
	flesh	yellow
Yield		very good
Quality		fairly firm texture free from discoloration average dry matter content
Blight	foliage	moderately susceptible
	tuber	slightly susceptible
Virus	A	very good resistance
	Yn	very good resistance
	X	slightly susceptible
	leaf roll	slightly susceptible
Golden nematode		resistant A (Ro1)
Wart		immune
Common scab		moderately susceptible
Drought		slightly susceptible



Cross: Adora x Lido

Production notes

Soil		most suitable for sandy and light clay soil
Fertilisation	N	as per local requirement
	P	as per local requirement
	K	as per local requirement
Weed control		susceptible to SENCOR; maximum dose 250 gr per hectare
Anti sprouting		to avoid skin burn use of chemicals is not recommended
Storage		good

DEN HARTIGH BV is not responsible for any damage caused by using this information.

Ludmilla



DEN HARTIGH BV

pommes de terre - potatoes - kartoffeln

P.O.Box 3
8300 AA EMMELOORD
Netherlands

phone +31-527-298000
telefax +31-527-298001
info@denhartigh-potato.nl

Variety description

Maturity		medium-early
Plant		tall rapid development good cover inflorescences rather numerous white flowers
Tubers	shape	long-oval very shallow eyes
	skin	large
	flesh	dark-yellow yellowish white
Yield		good
Quality		slightly mealy texture free from discoloration high dry matter content excellent for French fries
Blight	foliage	moderately susceptible
	tuber	very good resistance
Virus	A	slightly susceptible
	Yn	slightly susceptible
	X	slightly susceptible
	leaf roll	very good resistance
Golden nematode		resistant A (Ro1)
Wart		immune
Common scab		very good resistance
Drought		slightly susceptible



Cross: Diana x Innovator

Production notes

Soil		most suitable for sandy and clay soil
Fertilisation	N	best performance at 120% of local requirement
	P	as per local requirement
	K	as per local requirement
Weed control		susceptible to SENCOR; maximum dose 250 gr per hectare
Anti sprouting		to avoid skin burn use of chemicals is not recommended
Storage		very good for long term

Minerva



DEN HARTIGH BV

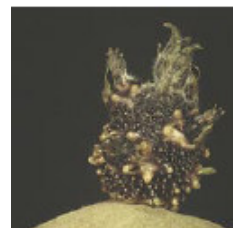
pommes de terre - potatoes - kartoffeln

P.O.Box 3
8300 AA EMMELOORD
Netherlands

phone +31-527-298000
telefax +31-527-298001
info@denhartigh-potato.nl

Variety description

Maturity		very early
Plant		medium height rapid development fairly good cover inflorescences rather few white flowers
Tubers	shape	round to oval shallow eyes very large
	skin	yellowish white
	flesh	pale-yellow
Yield		good
Quality		fairly firm texture free from discoloration average dry matter content
Blight	foliage	moderately susceptible
	tuber	moderately susceptible
Virus	A	resistant
	Yn	very good resistance
	X	resistant
	leaf roll	slightly susceptible
Golden nematode		resistant A (Ro1)
Wart		immune
Common scab		moderately susceptible
Drought		moderately susceptible



Cross: Y66-13-636 x Y68-4-103

Production notes

Soil		most suitable for sandy and light clay soil
Fertilisation	N	as per local requirement
	P	as per local requirement
	K	as per local requirement
Weed control		very susceptible to SENCOR; application of other herbicides is recommended
Anti sprouting		to avoid skin burn use of chemicals is not recommended
Storage		good

Miranda



DEN HARTIGH BV

pommes de terre - potatoes - kartoffeln

P.O.Box 3
8300 AA EMMELOORD
Netherlands

phone +31-527-298000
telefax +31-527-298001
info@denhartigh-potato.nl

Variety description

Maturity	early
Plant	medium height fairly rapid development good cover inflorescences normal white flowers
Tubers	shape oval shallow eyes large
	skin yellow
	flesh yellow
Yield	very good
Quality	fairly mealy texture free from discoloration high dry matter content excellent for French fries
Blight	foliage slightly susceptible tuber slightly susceptible
Virus	A very good resistance Yn slightly susceptible X very good resistance leaf roll slightly susceptible
Golden nematode	resistant A (Ro1)
Wart	immune
Common scab	moderately susceptible
Drought	moderately susceptible



Cross: Agria x AG84-009

Production notes

Soil	most suitable for light clay soil
Fertilisation	N as per local requirement P as per local requirement K as per local requirement
Weed control	susceptible to SENCOR; maximum dose 250 gr per hectare
Anti sprouting	to avoid skin burn use of chemicals is not recommended
Storage	very good for long term

Princess



DEN HARTIGH BV

pommes de terre - potatoes - kartoffeln

P.O.Box 3
8300 AA EMMELOORD
Netherlands

phone +31-527-298000
telefax +31-527-298001
info@denhartigh-potato.nl

Variety description

Maturity	early
Plant	short fairly rapid development fairly good cover inflorescences normal white flowers
Tubers	
shape	round to oval shallow eyes medium-large
skin	yellow
flesh	yellow
Yield	very good
Quality	firm texture free from discoloration low dry matter content
Blight	
foliage	slightly susceptible
tuber	slightly susceptible
Virus	
A	very good resistance
Yn	very good resistance
X	very good resistance
leaf roll	slightly susceptible
Golden nematode	resistant A (Ro1)
Common scab	slightly susceptible
Drought	moderately susceptible



Cross: Dunja x Arnika

Production notes

Soil	most suitable for sandy and light clay soil
Fertilisation	N P K best performance at 120% of local requirement as per local requirement as per local requirement
Weed control	moderately susceptible to SENCOR; maximum dose 500 gr per hectare
Anti sprouting	to avoid skin burn use of chemicals is not recommended
Storage	good

Sprint



DEN HARTIGH BV

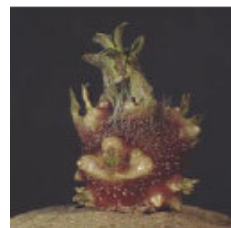
pommes de terre - potatoes - kartoffeln

P.O.Box 3
8300 AA EMMELOORD
Netherlands

phone +31-527-298000
telefax +31-527-298001
info@denhartigh-potato.nl

Variety description

Maturity		very early
Plant		medium height fairly rapid development good cover inflorescences rather few white flowers
Tubers	shape	round to oval shallow eyes
	skin	large
	flesh	yellow pale-yellow
Yield		very good
Quality		fairly firm texture free from discoloration high dry matter content excellent for French fries
Blight	foliage	slightly susceptible
	tuber	slightly susceptible
Virus	A	slightly susceptible
	Yn	very good resistance
	X	slightly susceptible
	leaf roll	slightly susceptible
Golden nematode		resistant A (Ro1)
Wart		immune
Common scab		moderately susceptible
Drought		slightly susceptible



Cross: Sirco x MIN 72-74

Production notes

Soil		most suitable for light clay soil
Fertilisation	N	as per local requirement
	P	as per local requirement
	K	as per local requirement
Weed control		susceptible to SENCOR; maximum dose 250 gr per hectare
Anti sprouting		to avoid skin burn use of chemicals is not recommended
Storage		good

Taisiya



DEN HARTIGH BV

pommes de terre - potatoes - kartoffeln

P.O.Box 3
8300 AA EMMELOORD
Netherlands

phone +31-527-298000
telefax +31-527-298001
info@denhartigh-potato.nl

Variety description

Maturity		medium-early
Plant		medium height fairly rapid development fairly good cover inflorescences rather few light red-purple flowers
Tubers	shape	oval very shallow eyes large
	skin flesh	pale-yellow pale-yellow
Yield		very good
Quality		fairly firm texture fairly free from discoloration average dry matter content
Blight	foliage tuber	slightly susceptible slightly susceptible
Virus	A Yn X leaf roll	very good resistance very good resistance very good resistance very good resistance
Golden nematode		resistant A (Ro1)
Common scab		slightly susceptible
Drought		slightly susceptible



Cross: Milva x YP95-111

Production notes

Soil		most suitable for sandy and light clay soil
Fertilisation	N P K	as per local requirement as per local requirement as per local requirement
Weed control		susceptible to SENCOR; maximum dose 250 gr per hectare
Anti sprouting		to avoid skin burn use of chemicals is not recommended
Storage		very good

Toscana



DEN HARTIGH BV

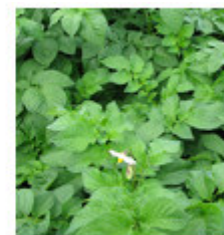
pommes de terre - potatoes - kartoffeln

P.O.Box 3
8300 AA EMMELOORD
Netherlands

phone +31-527-298000
telefax +31-527-298001
info@denhartigh-potato.nl

Variety description

Maturity		medium-early
Plant		tall rapid development good cover inflorescences normal white flowers
Tubers	shape	round to oval very shallow eyes large
	skin flesh	yellow dark-yellow
Yield		good
Quality		fairly firm texture fairly free from discoloration average dry matter content
Blight	foliage tuber	slightly susceptible very good resistance
Virus	A Yn X leaf roll	slightly susceptible very good resistance very good resistance moderately susceptible
Golden nematode		resistant A (Ro1)
Common scab		very good resistance
Drought		slightly susceptible



Cross: Marabel x Valetta

Production notes

Soil		most suitable for sandy and clay soil
Fertilisation	N P K	as per local requirement as per local requirement as per local requirement
Weed control		susceptible to SENCOR; maximum dose 250 gr per hectare
Anti sprouting		to avoid skin burn use of chemicals is not recommended
Storage		good

Ultra



DEN HARTIGH BV

pommes de terre - potatoes - kartoffeln

P.O.Box 3
8300 AA EMMELOORD
Netherlands

phone +31-527-298000
telefax +31-527-298001
info@denhartigh-potato.nl

Variety description

Maturity		medium-early
Plant		tall fairly rapid development good cover inflorescences normal white flowers
Tubers	shape	long-oval very shallow eyes very large
	skin	yellow
	flesh	pale-yellow
Yield		very good
Quality		fairly firm texture free from discoloration fairly high dry matter content
Blight	foliage	slightly susceptible
	tuber	slightly susceptible
Virus	A	slightly susceptible
	Yn	slightly susceptible
	X	slightly susceptible
	leaf roll	slightly susceptible
Golden nematode		resistant A (Ro1)
Common scab		slightly susceptible
Drought		slightly susceptible



Cross: Planta x Concurrent

Production notes

Soil		most suitable for light clay soil
Fertilisation	N	as per local requirement
	P	as per local requirement
	K	as per local requirement
Weed control		very susceptible to SENCOR; application of other herbicides is recommended
Anti sprouting		to avoid skin burn use of chemicals is not recommended
Storage		good

Vitesse



DEN HARTIGH BV

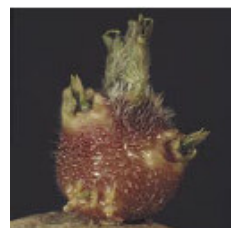
pommes de terre - potatoes - kartoffeln

P.O.Box 3
8300 AA EMMELOORD
Netherlands

phone +31-527-298000
telefax +31-527-298001
info@denhartigh-potato.nl

Variety description

Maturity		very early
Plant		medium height rapid development fairly good cover inflorescences rather few white flowers
Tubers	shape	oval very shallow eyes large
	skin	yellow
	flesh	pale-yellow
Yield		very good
Quality		fairly firm texture free from discoloration average dry matter content
Blight	foliage	slightly susceptible
	tuber	slightly susceptible
Virus	A	very good resistance
	Yn	very good resistance
	X	moderately susceptible
	leaf roll	slightly susceptible
Golden nematode		resistant A (Ro1)
Wart		immune
Common scab		slightly susceptible
Drought		slightly susceptible



Cross: Wilja x W72-22-496

Production notes

Soil		most suitable for light clay soil
Fertilisation	N	as per local requirement
	P	as per local requirement
	K	as per local requirement
Weed control		very susceptible to SENCOR; application of other herbicides is recommended
Anti sprouting		to avoid skin burn use of chemicals is not recommended
Storage		good